

User Manual

AMBIANO®

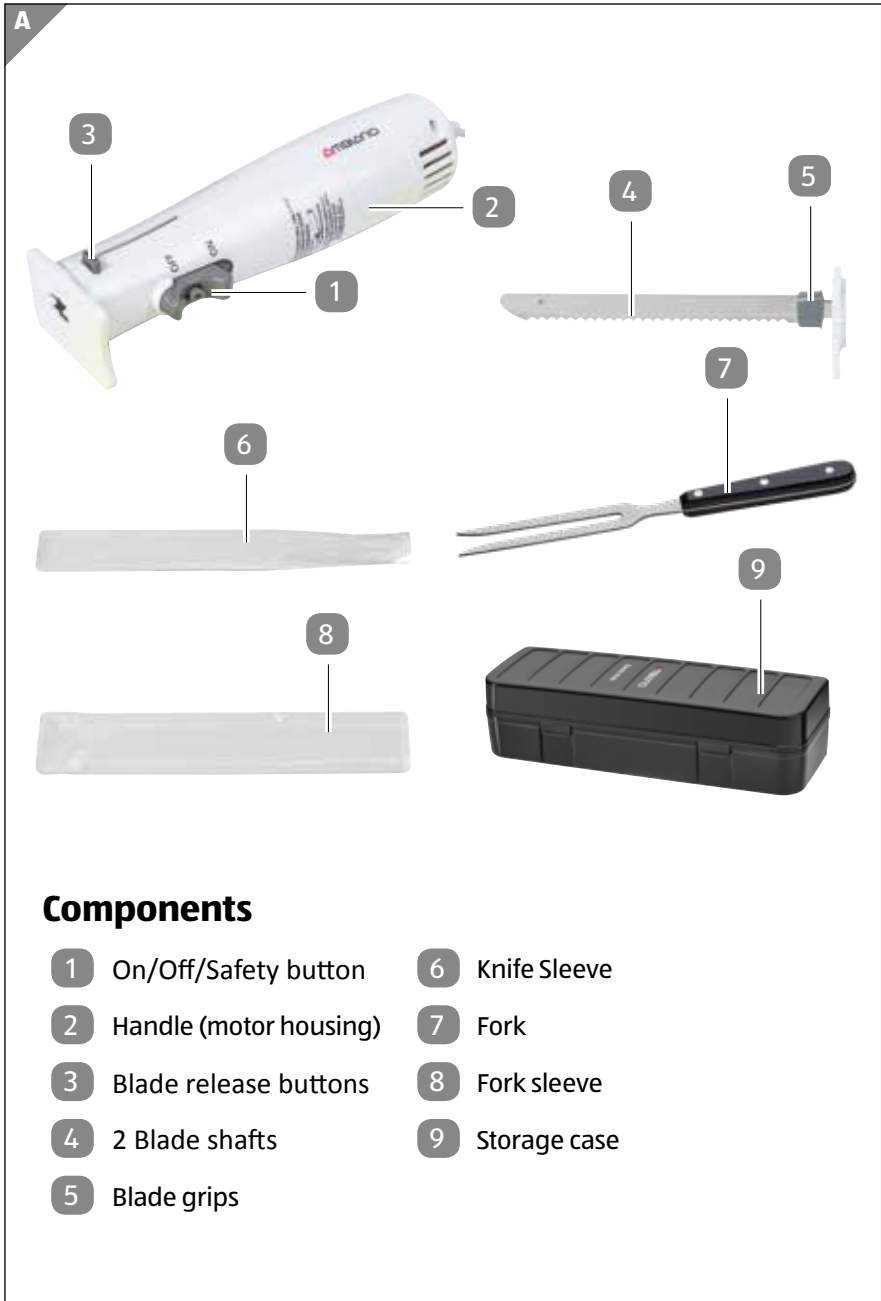
ELECTRIC KNIFE WITH STORAGE CASE

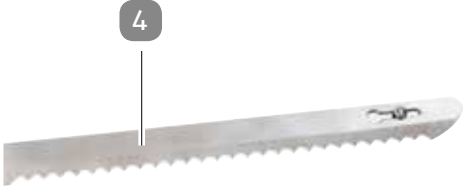




Table of contents

Package contents	3
Components	5
General information	5
Reading and storing these instructions	5
Proper use.....	5
Explanation of symbols	6
Safety	6
Explanation of instructions.....	6
General safety information	6
First use	11
Checking the Electric Knife and the package contents	12
User instructions	13
How to use	13
Helpful hints	14
Cleaning and maintenance	14
Storage	15
Technical specifications	16
Disposal	16
Disposing of the packaging	16
Disposing of the product	16

Package contents



<p>B</p> <p>Fig. 1 – Lock blades together</p> <p>4 2 Blade shafts</p>	
<p>Fig. 2 – Insert the blade shafts into the slots</p>	
<p>Fig. 3 – Turn ON the knife</p> <p>1 On/Off/Safety button</p>	

Components

Handle (motor housing)

2 Blade shafts

Fork

Knife sleeve

Fork sleeve

Storage case

Instruction manual

General information

READ AND SAVE THESE INSTRUCTIONS



These instructions are for this electric knife with storage case (referred to as “electric knife” below). They contain important information on setup and handling.

Before using the electric knife, read the instructions for use carefully.

This particularly applies to the safety instructions. Failure to do so may result in serious injury or damage to the electric knife.

Store these instructions for any further use. Make sure to include these instructions when passing the electric knife on to third parties.

You may contact us at **service@wkfe.com.hk** for an electronic file of this instruction manual.

Proper use

The electric knife is designed for indoor domestic use only.

It is only intended for personal use and is not suitable for commercial use.

Only use the electric knife as described in the instructions. Any other use is considered improper and can result in material damage or even in harm to persons. The electric knife is not a toy.

The manufacturer or retailer assumes no liability for damage resulting from improper or incorrect use.

Explanation of symbols

The following symbols are used in these instructions, on the product or on the packaging.



This symbol gives you useful additional information concerning operation.



This symbol identifies electrical devices that belong to the protection class 2.



The RCM Mark (Regulatory Compliance Mark) indicates that the product complies with the relevant guidelines of the ACMA as well as corresponding government requirements for the safety of electrical devices.

Safety

Explanation of instructions

The following symbols and signal words are used in these instructions.



This signal symbol/word refers to a hazard with a medium level of risk that, if not avoided, may result in death or serious injury.



This signal symbol/word refers to a hazard with a low level of risk that, if not avoided, may result in minor or moderate injury.



This signal word warns of possible material damage.

General safety information



Risk of electric shock!

Faulty installation of electronics or an excessively high supply voltage may result in electric shock.

- Switch off the appliance and disconnect from supply before changing accessories or approaching parts that move in use.
- If the supply cord is damaged, it must be replaced by the manufacturer, its service agent or similarly qualified persons in order to avoid a hazard.
- This appliance is intended to be used in household and similar applications such as:
 - staff kitchen areas in shops, offices and other working environments;
 - farm housed;
 - by clients in hotels, motels and other residential type environments;
 - bed and breakfast type environments.
- Use only a 220-240V AC outlet. ALWAYS plug and unplug electric knife with dry hands.
- Only plug the electric knife into an easily accessible outlet. You can quickly disconnect the plug from the power grid in the event of an incident.
- Do not operate the electric knife if it is visibly damaged or if the power plug is defective.
- Do not open the housing. Contact a specialist workshop, for repairs. If you perform repairs on your own, improperly plug in the electric knife or incorrectly operate it, any liability and warranty claims will be deemed invalid.
- In the case of repairs, only parts that correspond to the original device data may be used. This electric knife contains electrical and mechanical parts that are essential to ensuring protection against sources of danger.
- Do not submerge the electric knife or the power plug in water or other liquids.
- Do not position the electric knife above tubs, sinks or other objects filled with water.
- Never try to pick up an electronic device connected to the grid if it has fallen into water. If this happens, immediately unplug the

power plug from the outlet. Never handle the power plug with wet hands.

- Do not abuse the power cord. Never carry the electric knife by the power cord or pull the power cord to disconnect the outlet plug from an outlet; instead grasp the outlet plug and pull to disconnect.
- Keep the electric knife and the power plug away from open flames and hot surfaces.
- Do not bend the power cord or lay it over sharp edges.
- If you would like to clean the electric knife or a malfunction occurs, always switch off the electric knife and unplug it from the grid
- Keep the electric knife, the power cord, and the power plug away from children.
- Never operate the electric knife with a damaged power supply cord or plug.



Risks to children and people with reduced physical, sensory or mental capabilities (for example, partially disabled people, older people with limited physical and mental capabilities) or a lack of experience and knowledge.

- This appliance is not intended for use by persons (including children) with reduced physical, sensory, or mental capabilities, or lack of experience and knowledge, unless they have been given supervision or instruction concerning use of the appliance by a person responsible for their safety. Children should be supervised to ensure that they do not play with the appliance.
- Do not let children play with the packaging film. Children may get caught in it and suffocate if they play with it.



Explosion and fire hazard!

Improperly handling the electric knife may cause an explosion or a fire.

- Keep the electric knife away from water, other liquids, open flames, and hot surfaces.
- Do not cover the electric knife or the power plug with items or clothing.
- Maintain a distance of at least 2 inches from highly flammable materials.
- Do not expose the electric knife to excessive heat, such as direct sunlight, fire or the like.
- Only use the electric knife using the supplied accessories.

NOTICE!

Risk of damage!

Improperly handling the electric knife may cause it to become damaged.

- To protect against electrical shock, do not immerse power cord or plug in water or any other liquid. This is an electrical appliance. To avoid the risk of electrical shock or serious personal injury, always operate with dry hands.
- Never leave the electric knife connected to the power outlet when not in use.
- Never pull the power cord to remove from outlet.
- Do not use the electric knife for other than intended use. Do not use outdoors. For household use only.
- Close supervision is necessary when any appliance is being used by or near children. This electric knife is not intended for use by persons (including children) with reduced physical, sensory or mental capabilities, or lack of experience and knowledge, unless they have been given supervision or instruction concerning the use of the electric knife by a person responsible for their safety.
- Never leave the electric knife unattended while it is operating.
- Unplug the electric knife from the electrical outlet when not in use, before cleaning, and before putting on or taking off the attachments.

- If electric knife stops due to improper operation or if there is excessive noise, turn power off, wait for blades to stop, unplug from electrical outlet. DO NOT open the handle to repair. Return appliance to the nearest authorized service facility for examination, repair or electrical or mechanical adjustment.
- Do not operate the electric knife with a damaged power cord or plug or after the appliance malfunctions or is dropped or damaged in any manner.
- Do not let the power cord hang over the edge of a table or counter or touch any hot surface.
- Always operate your electric knife on a cutting board on a stable surface.
- The use of accessory attachments not recommended by the manufacturer may result in fire, electrical shock, or risk of injury.
- Do not place electric knife on or near hot gas or electric burner, or in a heated oven.
- Avoid contact with moving parts. To reduce the risk of injury to persons and/or damage to the electric knife, do not put your hands, hair clothing or other objects other than the food you intend to cut near the blades.
- Blades are sharp! Handle carefully. Unplug before handling blades. Always handle blades with hand away from cutting edge. Always use caution when washing your blades.
- To avoid personal injury, keep hands and utensils away from its sharp blade during operation.
- Do not operate the electric knife in water or under running water.
- Do not use the electric knife with hard foods such as bone and frozen foods. Do not use the electric knife for longer than 5 minutes at a time. Allow the knife to cool completely before continuing.
- Always make sure the cord is not plugged into outlet when inserting and removing the blades from the handle (motor housing).
- Always handle by the side opposite the cutting edge or by the plastic guard.

- Never wrap the power cord around the handle (motor housing).
- Always store blades with cutting edge away from you.

First use



Risk of damage!

Read and understand all instructions. Failure to follow all instructions listed below may result in electric shock, fire or serious personal injury. The warnings, cautions, and instruction discussed in this instruction manual cannot cover all possible conditions and situations that may occur. It must be understood by the operator that common sense and caution are a factor which cannot be built into this product, but must be supplied by the operator.



Risk of damage!

A short power supply cord is provided to reduce the risk of personal injury resulting from becoming entangled in or tripping over a longer cord. Extension cords are available from local hardware stores and may be used if care is exercised. If an extension cord is required, special care and caution is necessary. Also the cord must be: (1) marked with an electrical rating of 220-240V, and at least 10 A., and (2) the cord must be arranged so that it will not drape over the countertop or tabletop where it can be pulled on by children or tripped over accidentally.

NOTICE!

Electric power

If the electric circuit is overloaded with other appliances, your electric knife may not operate properly. The electric knife should be operated on a separate electrical circuit from other operating appliances.

Checking the electric knife and the package contents

Risk of damage!

If you open the packaging carelessly using a sharp knife or other sharp objects, the electric knife may quickly become damaged.

1. Unpack the electric knife with Storage Case from the box.
2. Remove all bags and packaging before use.
3. Wipe clean all the parts with a soft damp cloth or sponge and warm water. Rinse and dry thoroughly.



Do not submerge the handle (motor housing), power cord or plug in water or any other liquids. The handle is NOT dishwasher safe.



The blades are **very sharp!** Handle with care.

DO NOT USE ANY ABRASIVE MATERIAL TO CLEAN THE SURFACE
DO NOT IMMERSE THE electric knife INTO WATER AT ANY TIME



Risk of damage!

Although your electric knife is easy to operate, for your safety, the warnings below must be followed:

1. Do not place the electric knife near a heat source.
2. Never leave the electric knife unattended while connected to the electrical outlet.
3. Use the electric knife on a stable work surface away from water.
4. Do not unplug from the wall outlet by pulling on the supply cord.
5. The electric knife must always be unplugged:
 - A. After each use.

- B. If it appears to be faulty.
- C. Before cleaning or maintenance.

User instructions

NOTICE!

Before first use

Read all instructions before first use and follow them carefully. Wash all pieces, except handle (with motor), in warm soapy water. Rinse and dry thoroughly before first use. Do NOT immerse handle in water or any other liquid.

How to use



The blades are very sharp! Handle with care.

NOTICE!

The electric knife should not run for more than 5 minutes continuously. Allow the knife to cool down completely before continuing.

1. Be sure cord is not plugged into outlet when inserting or removing the blade assembly.
2. Hold the blade shafts **4** with the blade grips facing outwards. Lock blades together by sliding rivet on one blade into keyhole in the other blade (p. 4, fig. 1 **4**).
3. Hold the handle **2** with the power switch facing downwards. Holding the blade shafts by the blade grips **5**, insert the blade shafts into the slots on the top of the handle with the blade edge facing downwards (p. 4, fig. 2).
4. You will hear a click and the blade release buttons **3** will pop out when the blade shafts have been inserted properly.
5. Place food on a cutting board and make sure the cutting board is on a dry, stable surface. Plug in the power cord.

6. To turn the knife ON, press the safety button down **1** and slide it back towards the base of the handle. The safety button must be held down to operate the electric knife. Release safety button to turn OFF (p. 4, fig. 3 **1**).
7. Gently press the knife into the food you wish to cut while using the fork to hold the food in place. Do not use a back and forth sawing motion.
8. To disassemble the electric knife, press the blade release buttons **3** on either side of the handle to eject the blade shafts.
9. Carefully remove the blade shafts **4** by grasping the blade grips **5** and then slide the blade shafts apart by sliding the rivet out of the connector slot.

Helpful hints

1. When slicing meat near the bone, cut almost to the bone and then manually separate the meat from the bone. Do not attempt to cut through the bone.
2. Do not use to cut frozen food.
3. Move the knife through food. Do not use a back and forth sawing motion.
4. Allow meats to stand 15 minutes after cooking and before slicing.
5. Do not attempt to sharpen serrated blades. Replacement blades may be purchased. Call customer service for more information.
6. Always clean blades between cutting different foods to avoid cross contamination.



Do not submerge the handle (motor housing), power cord or plug in water or any other liquids. The handle is NOT dishwasher safe.



The blades are **very sharp!** Handle with care.

Cleaning and maintenance

Portable electric knives require regular cleaning in order to reduce the risk of bacterial growth and also to remove any scale residue to maintain good operational performance. Follow the procedures below for healthy maintenance of your electric knife.

**CAUTION!**

Always be sure that the electric knife is unplugged and completely cooled before cleaning or attempting to store the item. **NEVER IMMERSE** base in water or any other liquid.

It is important to clean your electric knife thoroughly after each use to prevent sticky build ups that are difficult to clean later. Proper cleaning of the electric knife leads to clean, better tasting food.

- When performing any cleaning or maintenance to this unit, be sure to unplug from power outlet first.
- Remove the individual parts from the electric knife handle.
- Carefully wash the parts in warm soapy water, rinse, and dry thoroughly before storing. The blades are dishwasher suitable and should be placed on the upper shelf of the dishwasher, however this is not the recommended cleaning method.
- Wipe the base with a damp cloth, sponge or paper towel. Do NOT immerse the base or run water over the base unit. Dry the surfaces with a soft cloth or paper towel before storing.
- Do not use abrasive cleaners on any part of the electric knife.
- Carefully place sleeves over blade shafts and fork.
- Place handle, blade shafts, fork, guard and bread guide in storage box. Store in a cool dry location out of reach of children. Never wrap the power cord around the handle.

**WARNING!**

Do not submerge the handle (motor housing), power cord or plug in water or any other liquids. The handle is **NOT** dishwasher safe.

**CAUTION!**

The blades are very sharp! Handle with care.

Storage

Allow the electric knife to dry completely before storing. Store the electric knife in a dry location. Do not place any heavy items on top of electric knife during storage as

this may result in possible damage of the appliance. Always check the plug before use to assure metal items have not become attached.

- Allow the electric knife to cool completely before storing.
- Store the electric knife in a dry location in the original box if possible.
- Do not place any heavy items on top of the electric knife during storage as this may result in possible damage.

Technical specifications

Model:	XJ-15411-S, XJ-15411-W
Supply voltage:	220–240 V~, 50–60 Hz
Output:	120W
Material:	
Handle (motor housing):	ABS
Blades:	Stainless steel
Cable length:	approx. 152 cm
Protection class:	II
Weight:	approx. 0.594 kg (unit + blades) approx. 0.907 kg (including storage case)
Dimensions:	approx. 235 x 65 x 58 mm (electrical knife) 295 x 105 x 77 mm (storage case)
Article number:	809913

Disposal

Disposing of packaging

Sort the packaging before you dispose of it. Dispose of paperboard and cardboard with the recycled paper service and wrappings with the appropriate collection service.

Disposing of the product

Old appliances may not be disposed of in the household waste!



Should the product no longer be capable of being used at some point in time, **dispose of it in accordance with the regulations in force in your city or county.** This ensures that old appliances are recycled in a professional manner and also rules out negative consequences for the environment. For this reason, electrical equipment is marked with the symbol shown here.

ALDI guarantees that our exclusive brand products are developed to our stringent quality specifications. If you are not entirely satisfied with this product, please return it to the nearest ALDI store within 60 days from the date of purchase, for a full refund or replacement, or take advantage of our after sales support by calling the supplier's Customer Service Hotline.



Made in China

AMBIANO is a registered trademark of ALDI Stores

DISTRIBUTED BY:

ALDI STORES
1 SARGENTS ROAD
MINCHINBURY NSW 2770
www.aldi.com.au

AFTER SALES SUPPORT

809913



AU

1800 898 750



service@wkfe.com.hk

MODEL:

XJ-15411-S, XJ-15411-W

12/2021

3

**YEAR
WARRANTY**