



User Manual



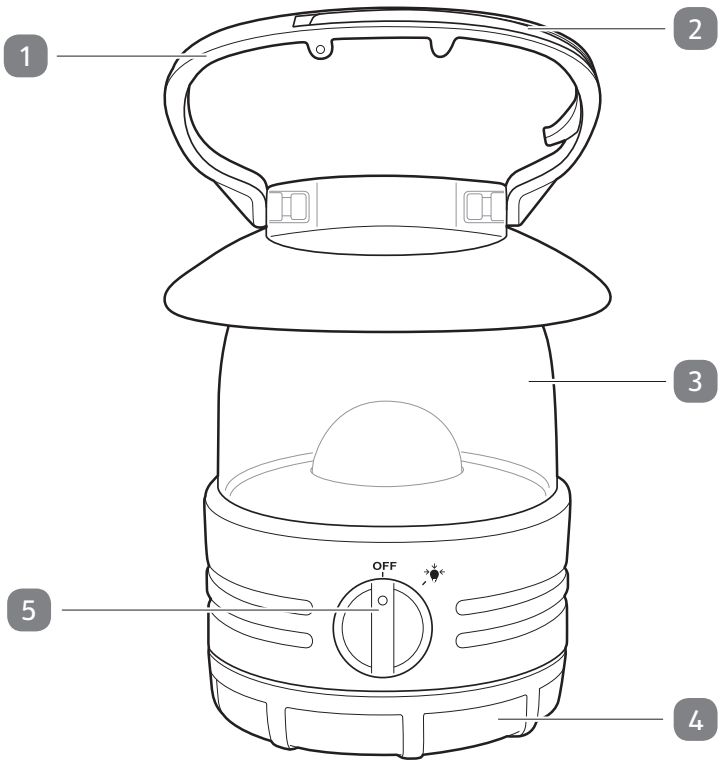
LED CAMPING LIGHT

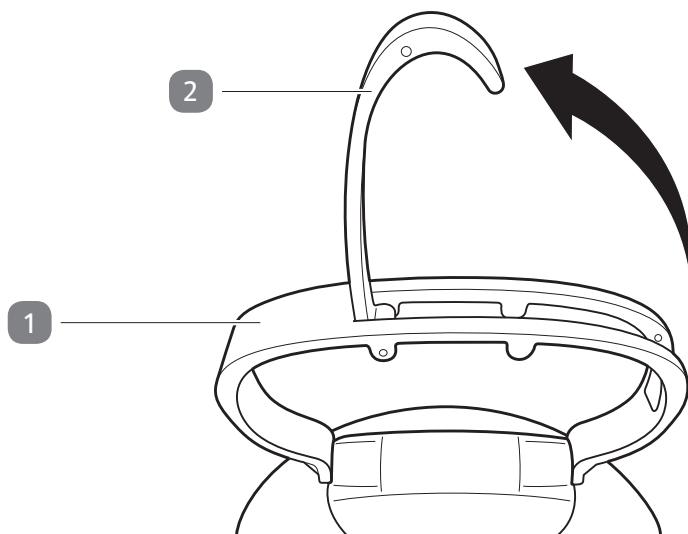


Contents

Overview	3
Use.....	4
Package contents/device parts.....	5
General information.....	6
Reading and storing the user manual	6
Explanation of symbols	6
Safety	7
Proper use.....	7
Safety instructions.....	7
First use.....	10
Checking the light and package contents.....	10
Inserting or changing batteries	11
Use.....	11
Switching the light on and off	11
Hanging up the light	11
Cleaning	11
Storage	12
Technical data	12
Declaration of Conformity.....	13
Disposal.....	13
Disposing of the packaging	13
Disposing of the light	13

A





Declaration of Conformity



We, AHG Wachsmuth & Krogmann mbH, at Lange Mühren 1, 20095 Hamburg, Germany, declare under our sole responsibility that the above-mentioned product meets the basic requirements of the listed EU guidelines. The EU Declaration of Conformity can be requested from the manufacturer's address on the warranty card.

Disposal

Disposing of the packaging



Dispose of the packaging separated into single type materials. Dispose of paperboard and cardboard with waste paper and plastics with recyclable waste.

Disposing of the light

(Applicable in the European Union and other European states with systems for the separate collection of reusable waste materials)



Old devices must not be disposed of with household waste!

If at some point it is no longer possible to use the light, all consumers are **required by law to dispose of old devices separately from their household waste**, for example, at a collection point in their municipality/ borough. This ensures that old appliances are recycled properly and helps prevent any negative impact on the environment. For this reason, electrical equipment is marked with the symbol shown here.



Batteries and rechargeable batteries must not be disposed of with household waste!

As the end user you are required by law to bring all batteries and rechargeable batteries, regardless whether they contain harmful substances* or not, to a collection point run by the communal authority or borough or to a retailer, so that they can be disposed of in an environmentally friendly manner.

Dispose of the light (including the battery) at your collection point in a discharged state only!

*labelled with: Cd = cadmium, Hg = mercury, Pb = lead

Package contents/device parts

- 1 Carrying handle
- 2 Suspension hook
- 3 Housing
- 4 Battery compartment cover
- 5 On/Off switch

The package contents include four type LR6 (AA) 1.5 V batteries.

General information

Reading and storing the user manual



This user manual accompanies this LED camping light (hereinafter referred to simply as the 'light'). It contains important information about start-up and handling.

Before using the light, please read through the user manual carefully.

This particularly applies to the safety instructions. Failure to observe this user manual may result in severe injury or damage to the light.

The user manual is based on the standards and regulations in force in the European Union. When abroad, you must also observe country-specific guidelines and laws.

Store the user manual for further use. If you pass the light on to third parties, please be absolutely sure to include this user manual.

Explanation of symbols

The following symbols and signal words are used in this user manual, on the light or on the packaging.



This signal symbol/word designates a hazard with a moderate degree of risk which may lead to death or severe injury if not avoided.



This signal word warns against potential damages to property.



This symbol provides you with useful supplementary information about assembly or operation.



The symbol indicates that the product corresponds to protection class III.

IP44

Protected against the ingress of solid foreign objects ≥ 1 mm and against splashed water.



WARNING – RISK OF SUFFOCATION!



Declaration of Conformity (see “Declaration of Conformity” section):
Products marked with this symbol meet all applicable Community regulations for the European Economic Area.

Safety

Proper use

The light is designed exclusively for use as a light source while camping. It is only intended for private use and is not suitable for commercial purposes. This light is used for accent lighting and is not suitable for room lighting in the home.

Only use the light as described in this user manual. Any other use is deemed improper and may result in damage to property or even personal injury. The light is not a children’s toy.

The manufacturer or vendor accepts no liability for damage caused by improper or incorrect use.

The light source of this light cannot be replaced. Replace the whole light when the light source has reached the end of its life.

Safety instructions



Risk of injury!

Handling the light improperly may result in injury.

- When in operation, do not look into the light for a prolonged period. This may be harmful to the eyes.
- Do not leave the light unattended while in use.



Risk of electric shock!

There is a risk of electrical shock if the light is used improperly.

- Do not use the light if it exhibits visible damage.
- Do not open the housing; always arrange for a qualified professional to carry out any repairs. Contact a qualified workshop for this. Liability and warranty claims are waived in the event of repairs performed by the user or incorrect operation.

- Only parts that comply with the original device data may be used for repairs. This light contains electrical and mechanical parts which are essential for providing protection against sources of danger.
- Only use a fully assembled appliance.
- Never place foreign objects on the light and never cover it.
- Do not place objects with open flames (e.g. candles) or liquid-filled objects (e.g. coffee mugs) on the light or close to the light.
- Keep the lights away from open fire and hot surfaces.
- Never store the light in such a way that there is a risk of it falling into a tub or sink.
- Always switch the light off when you are not using the light, cleaning it or in the event of a fault.



WARNING!

- This light may be used by children aged eight and over as well as by persons with impaired physical, sensory or mental capacities or those lacking experience and knowledge if they are supervised or have been instructed in how to safely use the light and have understood the risks associated with using the light. Children must not play with the light. Cleaning and user maintenance must not be performed by unsupervised children.
- Keep children under eight years of age away from the light.
- Do not allow children to play with the packaging material. Children may get caught in it when playing and suffocate.



WARNING!

Battery hazards!

If you use batteries improperly, there is a risk of explosions or chemical burns caused by battery acid.

- Never short circuit the batteries.
- Never dismantle the batteries.
- Never throw batteries into fire.
- Never expose batteries to excessive heat or direct sunlight.
- Never open batteries.
- Only use batteries of the same type.
- The battery must be removed from the luminaire before it is scrapped.
- The battery is to be disposed of safely.
- Ensure the correct polarity when inserting the batteries.
- Never use new and used batteries together.
- Change all batteries in a set at the same time.
- Do not charge any non-rechargeable batteries.
- Exhausted batteries are to be removed from the luminaire.
- Do not use Lithium type battery or rechargeable battery.
- Only touch leaky batteries with gloves. If you do happen to come into contact with battery acid, wash the affected area thoroughly with plenty of clean water. If battery fluid comes into contact with your eyes or mucous membranes, you should also seek medical attention immediately.
- Keep batteries away from children.

NOTICE!

Risk of damage!

Improper handling of the light may damage the light.

- Place the light on an easily accessible, level, dry, heat-resistant and sufficiently stable work surface. Do not place the light on the edge or corner of a work surface.
- Never place the light on or near hot surfaces (stove tops, etc.).
- Never expose the light to high temperatures (heaters, etc.) or to the effects of the weather (rain, etc.).

- Keep the light away from heat, such as radiators, stoves and other heat-generating appliances, from direct sunlight, dust and sharp edges.
- Never fill the light with liquid.
- Never attempt to clean the light by submerging it in water and do not use a steam cleaner to clean it. Otherwise, the light could be damaged.
- Never place the light in a dishwasher. It would be destroyed as a result.
- Stop using the light if its plastic parts or the light itself shows cracks or breaks or are deformed. Replace damaged parts only with compatible original spare parts.
- The use of accessories and parts not recommended by the manufacturer may cause damage and may lead to loss of the warranty.

First use

Checking the light and package contents


NOTICE!

Risk of damage!

If you are not cautious when opening the packaging with a sharp knife or other pointed objects, you may easily damage the light.

- Be very careful when opening.
 1. Take the light out of the packaging.
 2. Check to make sure that the delivery is complete (see **Fig. A**).
 3. Check whether the light or individual parts show signs of damage.
If this is the case, do not use the light. Contact the manufacturer at the service address specified on the warranty card.

Inserting or changing batteries

1. To open the battery compartment cover **4**, use a coin to turn it anticlockwise to the housing **3**.
2. Remove the old batteries first if they are still in the compartment.
3. Insert four 1.5 V , type AA/LR6 batteries into the battery compartment. Make sure the polarity of the batteries (+/-) is correct.
4. Put the battery compartment cover back onto the housing by turning it clockwise by hand. Make sure the sealing ring is correctly positioned.

Use

Switching the light on and off

- Turn the ON/OFF switch **5** on the light symbol to turn on the appliance. Turn the switch to position 'OFF' in order to turn off the appliance.

Hanging up the light

You can hang up the lantern, for example, on a branch or rod with the suspension hook **2** built into the carrying handle **1**.

- Flip up the suspension hook in order to hang up the light (see **Fig. B**).

Cleaning

NOTICE!

Risk of short circuit!

Water or other liquids that have penetrated the housing may cause a short circuit.

- Never immerse the light in water or other liquids.
- Make sure that no water or any other liquids get into the housing.

NOTICE!

Risk of damage!

Improper handling of the light may damage the light.



- Do not use any aggressive cleaners, brushes with metal or nylon bristles or sharp or metallic cleaning utensils such as knives, hard scrapers and the like. They could damage the surfaces.
- Never place the light in a dishwasher. It would be destroyed as a result.
 1. Remove the batteries from the light before cleaning it.
 2. Clean the light using a damp cloth and, if necessary, use a mild cleaning product.
 3. Dry all parts well before reusing or putting the light away.

Storage

All parts must be completely dry before being stored.

- Always store the light in a clean, dry area.
- Protect the light from direct sunlight.
- Store the light so that it is not accessible for children.

Technical data

Model:	WS-9917-BS (blue/black)
Illuminant:	1 x 0,5 W LED
Operating voltage:	6 V DC 
Batteries:	4 x AA/LR6; 1,5 V DC 
Luminous flux:	approx. 26 lm
Colour temperature:	approx. 6,500 K
Housing material:	ABS
Dimensions (Ø × H):	approx. 107 × 130 mm
Product code:	801121
Protection:	IP44



Great care has gone into the manufacture of this product and it should therefore provide you with years of good service when used properly. In the event of product failure within its intended use over the course of the first 3 years after date of purchase, we will remedy the problem as quickly as possible once it has been brought to our attention. In the unlikely event of such an occurrence, or if you require any information about the product, please contact us via our helpline support services, details of which are to be found both in this manual and on the product itself.



PRODUCED IN CHINA FOR:

ALDI STORES LTD. PO BOX 26, ATHERSTONE
WARWICKSHIRE, CV9 2SH.

ALDI STORES (IRELAND) LTD.
PO BOX 726, NAAS, CO. KILDARE.
Visit us at www.aldi.com

WKNF8077

AFTER SALES SUPPORT

801121



+4401909 517672



+353 012475437



aldi@0800repair.com

MODEL:

WS-9917-BS

06/2020

3
YEAR
WARRANTY