

# User Manual

# ViSAGE®

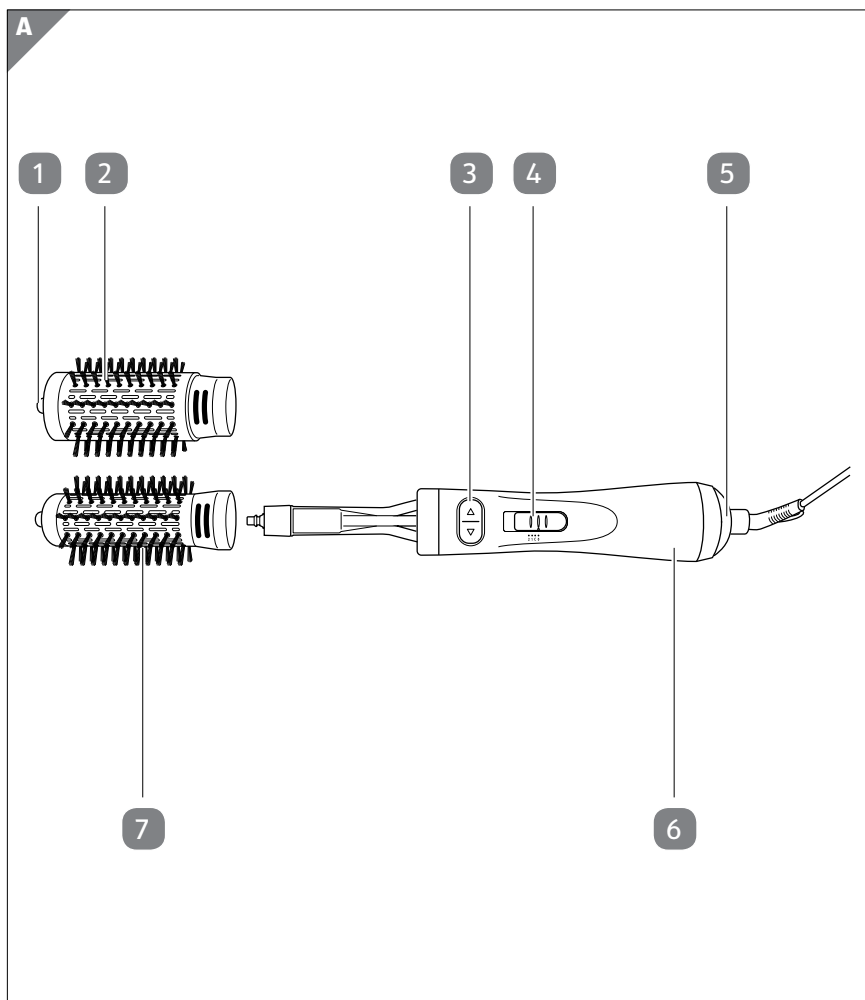
# HAIR VOLUME STYLER

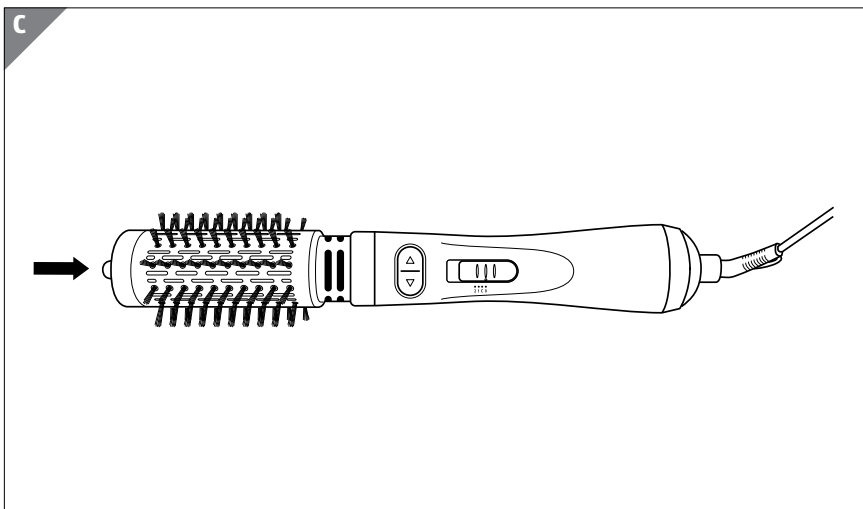
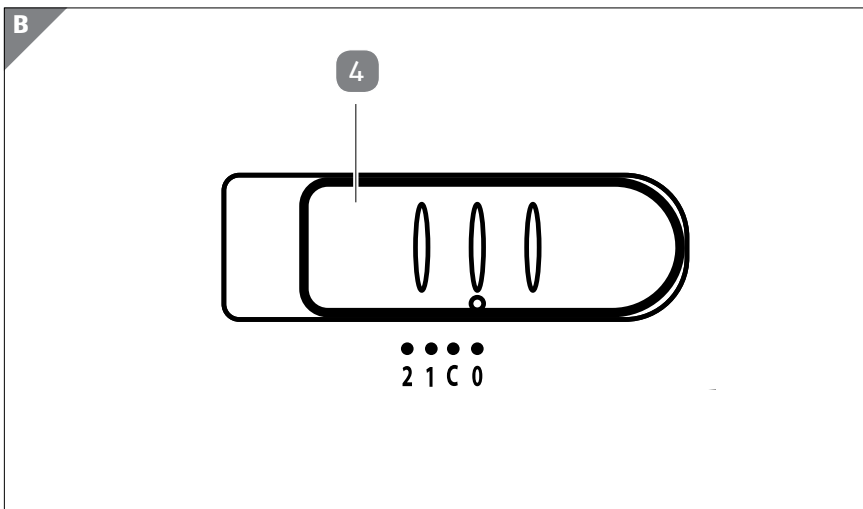


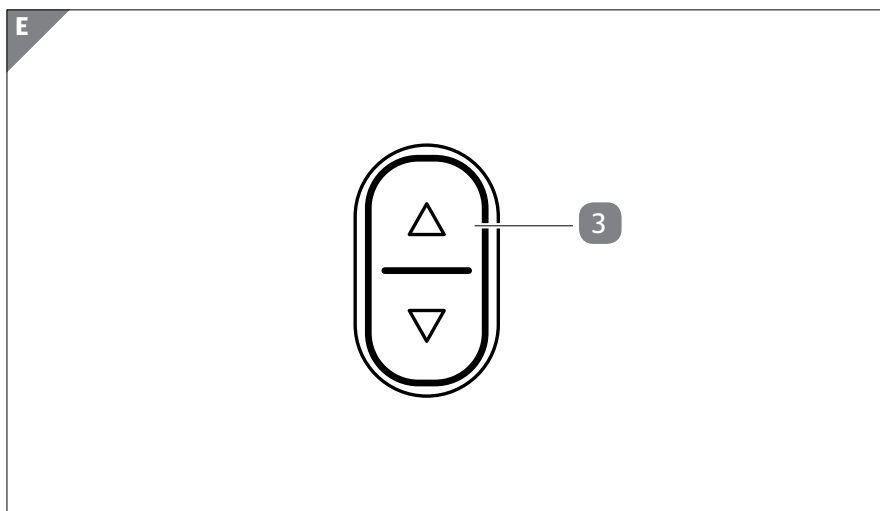
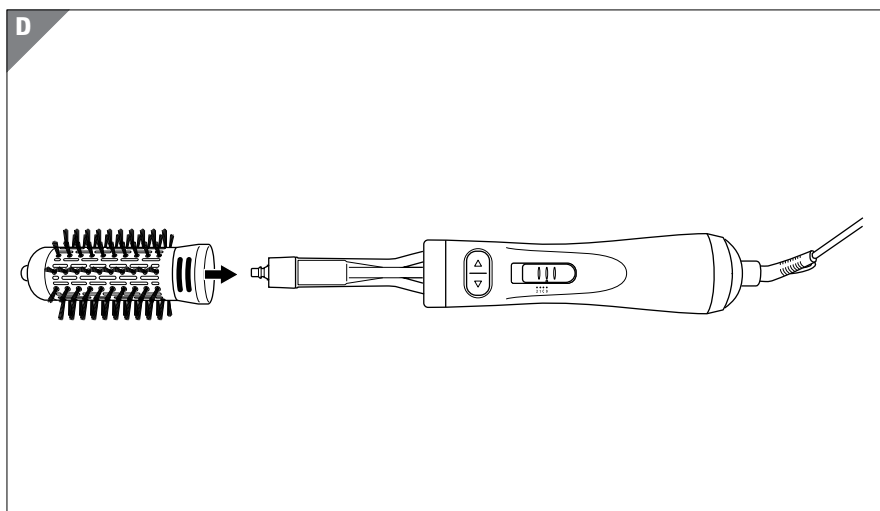
# Table of contents

<b>Scope of delivery</b> .....	<b>3</b>
Components .....	6
<b>General information</b> .....	<b>7</b>
Reading and storing the user manual .....	7
Proper use.....	7
Explanation of symbols .....	7
<b>Safety</b> .....	<b>8</b>
Explanation of notes .....	8
General safety notes .....	8
<b>First use</b> .....	<b>12</b>
Checking the product and package contents .....	12
Basic cleaning.....	13
<b>Operation</b> .....	<b>13</b>
Selecting the brush adapter .....	14
Selecting a function level .....	14
Styling your hair.....	14
Styling tips .....	15
<b>Automatic overheat protection</b> .....	<b>15</b>
<b>Cleaning</b> .....	<b>16</b>
<b>Storage</b> .....	<b>17</b>
<b>Technical data</b> .....	<b>17</b>
<b>Disposal</b> .....	<b>18</b>
Disposing of the packaging .....	18
Disposing of the product .....	18
<b>Warranty details</b> .....	<b>19</b>
<b>Repair and refurbished goods or parts notice</b> .....	<b>20</b>

# Scope of delivery







## Components

- 1 Lock button
- 2 Volume brush adapter
- 3 Direction of rotation switch
- 4 Function switch
- 5 Air intake and air outlet
- 6 Handheld section
- 7 Round brush adapter

# General information

## Reading and storing the user manual



This user manual accompanies this Hair Volume Styler (referred to below only as the 'product'). It contains important information about initial use and handling.

Before using the product, read the user manual carefully. This particularly applies to the safety instructions. Failure to observe this user manual may result in severe injury or damage to the product.

Store the user manual for future use. Make sure to include this user manual when passing the product on to third parties.

## Proper use

The product is only designed for styling wet and dry human hair. It is intended for private use only and is not suitable for commercial purposes, e.g. for a hair salon.

Use the product only as described in this user manual. Any other use is deemed improper and may result in damage to property or even personal injury. The product is not a children's toy.

The manufacturer or vendor accepts no liability for damage caused by improper or incorrect use.

## Explanation of symbols

The following symbols are used in this user manual, on the product or on the packaging.



This symbol provides you with useful supplementary information on use.



This symbol identifies electrical devices that belong to the protection class II.



This symbol states that the product must not be used near bath tubs, shower trays or other vessels containing water.



Products that bear this symbol may only be used indoors.



The RCM is a visible indication of a product's compliance with all applicable ACMA regulatory arrangements, including all technical and record-keeping requirements.



Before using the product, read the user manual carefully.

## Safety

### Explanation of notes

The following symbols and signal words are used in this user manual.



This signal symbol/word designates a hazard with moderate risk, which may result in death or severe injury if not avoided.



This signal symbol/word designates a hazard with low risk, which may result in minor or moderate injury if not avoided.



This signal word warns of possible damage to property.

### General safety notes



#### Risk of electric shock!

A faulty electrical installation or excessive mains voltage may result in an electric shock.

- Do not use the product on dripping-wet hair. Dry your hair beforehand with a towel.
- Do not use the product standing on a wet floor.
- Make sure that hair or other debris do not end up in the air intake and air outlet.
- Connect the product only to a mains socket that corresponds to the specification on the product's rating plate.



- 
- Only connect the product to an easily accessible socket so that you can quickly disconnect the product from the mains supply in case of a failure.
  - Do not use the product if it is visibly damaged or if the mains cord or mains plug is defective.
  - If the product's mains cord is damaged, it must be replaced by the manufacturer, the company's After Sales Support or a person with similar qualifications.
  - Do not open the housing; instead, have a qualified professional perform the repairs. Contact a qualified workshop for this. Liability and warranty claims are waived in the event of repairs performed by the user, improper connection or incorrect operation.
  - Only parts that comply with the original device data may be used for repairs. This product is equipped with electrical and mechanical parts which are essential for protection against potential hazards.
  - Do not operate the product with an external timer or separate remote control system.
  - Do not use the product near water.
  - Pull the mains plug after use if you are using the product in a bathroom. If water is nearby, there is a risk even if the product has been switched off.
  - As additional protection, it is recommended that you install a residual current protective device (FI/RCD) with a release current of no more than 30 mA in the bathroom power circuit. Ask your installation technician for advice.
  - Do not immerse the product, the mains cord or the mains plug in water or in other liquids.
  - Do not touch the mains plug with wet hands.
  - Never pull the mains plug out of the socket by the mains cord; instead, always do so by taking hold of the mains plug.
  - Never use the mains cord as a carrying handle.

- Keep the product, mains plug and mains cord away from open flames and hot surfaces.
- Lay the mains cord in such a way that it does not pose a tripping hazard.
- Do not kink the mains cord and do not lay it over sharp edges.
- Only use the product indoors.
- Never expose the product to the effects of the weather such as rain or snow.
- Never store the product in a way that leaves it at risk of falling into a bath tub or washbasin.
- Never reach to retrieve an electrical device if it has fallen into water. In such a case, immediately disconnect the mains plug from the socket.
- Make sure that children do not insert any objects into the product.
- Always switch the product off and pull the mains plug out of the socket when you are not using the product, when cleaning it, or in the event of a fault.
- Do not modify the product or mains cord in any way.
- Use only an extension cord or plug adapter that does not exceed the maximum current rating and that complies with valid safety regulations.
- Do not use the product during thunderstorms. In such a case, immediately disconnect the mains plug from the socket.



**Danger for children and persons with impaired physical, sensory or mental capacities (e.g. partially disabled persons, older persons with reduced physical and mental capacities) or lack of experience and knowledge (e.g. older children).**

- This product may be used by children aged eight years and over and by persons with impaired physical, sensory or

mental capacities or those lacking experience and knowledge if they are supervised or have been instructed in how to use the product safely and understand the risks associated with operating it. Children may not play with the product. Cleaning and user maintenance must not be performed by unsupervised children.

- Keep children under eight years of age away from the product and the connecting cable.
- Do not leave the product unattended while it is in operation.
- Do not let children play with the packaging wrapper. They may get caught in it when playing and suffocate.



### **Burn and fire hazard!**

Parts of the product get hot during use. You could burn yourself on them or they could cause a fire.

- Keep the product away from flammable objects during use.
- Do not touch the brush adapter, particularly the air intake and air outlet, during operation.
- Do not place any objects such as towels or newspapers on the product.
- Do not use the product for wigs or hairpieces made of synthetic materials.
- Do not cover the air intake and air outlet during operation.
- Clean the air intake and air outlet grate regularly.
- Immediately switch the product off if it gets too hot.
- Turn off the product and pull the mains plug out of the socket if the automatic overheat protection has been turned on and the product has been switched off.
- Make sure there is a safe distance to all flammable objects, e.g. curtains and drapes.
- Clearly advise other users of the risks.

**NOTICE!**

**Risk of damage!**

Improper handling of the product can damage the product.

- Do not place the product on the edge of a surface.
- Prevent the build-up of heat by setting down the product so that the heat produced during use can easily disperse into the surroundings.
- Never place the product on or near hot surfaces (e.g. hobs).
- Ensure that the mains cable does not come into contact with hot components.
- Never expose the product to high temperatures (heaters, etc.) or to the influence of weather (rain, etc.). Never fill the product with liquids.
- Never immerse the product in water or use a steam cleaner to clean it. Otherwise, the product could be damaged.
- Stop using the product if any plastic parts of the product show cracks or deformation. Replace damaged parts only with corresponding original spare parts.
- Only use the product with the enclosed accessories.
- Let the product cool off completely after each use.

**First use**

**Checking the product and package contents**

**NOTICE!**

**Risk of damage!**

If you are not careful when opening the packaging with a sharp knife or other pointed object, you may easily damage the product.

- Therefore, be very careful when opening the packaging.

1. Take the product out of the packaging.
2. Check to make sure that all parts are included (see **Fig. A**).
3. Check whether the product or the individual parts are damaged. If this is the case, do not use the product. Contact the manufacturer at the service address specified on the warranty card.

## Basic cleaning

1. Remove the packaging material and all protective foils.
2. Before first use, wipe down the product with a soft, damp cloth to remove any packaging and production residue.

## Operation



### **Burn and fire hazard!**

There is a burn hazard and risk of fire if you use the product without the brush adapter, for drying non-human, synthetic hair or clothing being worn on the body. There is a burn hazard if you change the brush adapter while the product is switched on or hot.

- Do not use the product without a brush adapter.
- Do not use the product to dry synthetic hair.
- Do not use the product to dry clothing.
- Always keep sufficient distance to body parts during use.
- Always switch the product off and pull the mains plug from the socket before you change the brush adapter.
- Make sure that the brush adapter is no longer hot before removing it.

## Selecting the brush adapter



Adjust the size of the brush adapter used to the length of your hair. Use the volume brush for long hair and the round brush for shorter hair.

This product comes with two different brush adapters which you can change: The round brush adapter **7** and the volume brush adapter **2**. Proceed as follows to change the brush adapter:

1. Make sure that the mains plug has been pulled from the socket.
2. Make sure that the function switch **4** is set to the **0** position (see **Fig. B**).
3. Press the lock button **1** (see **Fig. C**) and remove the brush adapter.
4. Attach the desired brush adapter to the handheld section **6** (see **Fig. D**) until you hear it click into place.

You can now use the product.

## Selecting a function level

The following table provides an overview of the function levels available.

Function level	Property
<b>0</b>	Off
<b>C</b>	cold high airflow
<b>1</b>	hot low airflow
<b>2</b>	hot high airflow

## Styling your hair

1. Make sure that the function switch **4** is set to the **0** position (see **Fig. B**).
2. Connect the product to a properly installed socket only.
3. Slide the function switch to the desired function level (see table in chapter 'Selecting a function level').
4. Separate a strand of hair from the rest of your hair.
5. Place the hair tips on the brush adapter **2** or **7**.
6. Push the direction of the rotation switch **3** in the desired direction to wind your strand of hair onto the brush adapter (see **Fig. E**).
7. Depending on the desired intensity, hold the wound up strand of hair on the brush adapter for a brief moment.
8. If necessary, use the cold air function to fix your hair. To do so, switch the function switch to position **C**.

9. To unwind the strand of hair again, push the direction of the rotation switch to the opposite direction as you would when winding the strand of hair.
10. Repeat the process for all strands of hair.
11. To switch off the product, slide the function switch to the **0** position.
12. If you no longer wish to use the product, pull the mains plug out of the socket.
13. Let the product cool down completely.
14. Clean the product as described in the chapter 'Cleaning'.

## Styling tips

Observe the following notes for successful styling:

- For maximum volume, first let the brush head rotate at the hairline for a few seconds.
- Use the large volume brush adapter **2** if you want plenty of volume.
- Use the small round brush adapter **7** to curl your hair.
- To curl your hair, wind your hair around the brush adapter several times.
- Use the cold air function to fix the curls before you unwind them from the brush adapter.
- To create waves to the inside or outside, only wind the ends of your hair around the brush adapter.

## Automatic overheat protection

The product has built-in overheat protection. If the product automatically switches off and cannot be switched back on again, overheat protection may be activated.

Proceed as follows:

1. Set the function switch **4** to the **0** position (see **Fig. B**).
2. Pull the mains plug out of the socket.
3. Let the product cool down completely.
4. Clean the air intake and air outlet **5** as described in the chapter 'Cleaning'.

## Cleaning



### **WARNING!**

#### **Risk of electric shock!**

If objects are inserted in the product through the air intake and air outlet, the product could be damaged and there is a risk of electric shock.

- Do not insert any objects in the product through the air intake and air outlet.
- Clean the air intake and air outlet regularly.
- Remove hair from the brush adapter after every use.

### **NOTICE!**

#### **Risk of short circuit!**

Water or other liquids that have penetrated the housing may cause a short circuit.

- Never submerge the product in water or other liquids.
- Make sure that no water or any other liquids get into the casing.

### **NOTICE!**

#### **Risk of damage!**

Improper handling of the product can damage the product.

- Do not use any aggressive cleaners, brushes with metal or nylon bristles or sharp or metallic cleaning utensils such as knives, hard scrapers, etc. These could damage the surfaces.
- Never place the product in a dishwasher. It would be destroyed as a result.



1. Before cleaning, pull the mains plug out of the socket.
2. Set the function switch **4** to the **0** position (see **Fig. B**).
3. Let the product cool down completely.
4. Remove the brush adapter **2** or **7** as described in chapter 'Selecting the brush adapter'.
5. Remove all hair from the brush adapter.
6. Clean the air intake and air outlet **5**. You can e.g. use a vacuum cleaner for this.
7. Wipe down the product with a dry or damp cloth and, if necessary, a small amount of dishwashing detergent.
8. Then let all parts dry completely.

## Storage

All parts must be completely dry before being stored.

- Always store the product in a dry location.
- Protect the product from direct sunlight.
- Store the product securely under lock and key to keep it out of the reach of children.

## Technical data

Model:	CT-521i
Supply voltage:	220–240 V~, 50–60 Hz
Output:	approx. 1,000 W
Material	
Handle:	ABS
Brushes:	Aluminium, PA, PC
Cable length:	approx. 180 cm
Protection class:	II
Weight:	approx. 0.6 kg
Dimensions:	approx. 420 mm (with brush), approx. 270 mm (without brush)
Article number:	804385

## Disposal

### Disposing of the packaging

- Sort the packaging before you dispose of it. Dispose of paperboard and cardboard with the recycled paper service and wrappings with the appropriate collection service.

### Disposing of the product

- Should the product no longer be capable of being used at some point in time, **dispose of it in accordance with the regulations in force in your city or county.**
- Please ensure your recycling information applies to the local regulations.



# ViSAGE®

## **Hair Volume Styler Warranty Details**

---

REGISTER YOUR PURCHASE AT [www.aldi.com.au/en/about-aldi/product-registration/](http://www.aldi.com.au/en/about-aldi/product-registration/)  
TO KEEP UP-TO-DATE WITH IMPORTANT PRODUCT INFORMATION



---


The product is guaranteed to be free from defects in workmanship and parts for a period of 36 months from the date of purchase. Defects that occur within this warranty period, under normal use and care, will be repaired, replaced or refunded at our discretion. The benefits conferred by this warranty are in addition to all rights and remedies in respect of the product that the consumer has under the Competition and Consumer Act 2010 and similar state and territory laws.

Our goods come with guarantees that cannot be excluded under the Australian Consumer Law. You are entitled to a replacement or refund for a major failure and for compensation for any other reasonably foreseeable loss or damage. You are also entitled to have the goods repaired or replaced if the goods fail to be of acceptable quality and the failure does not amount to a major failure.

---

### **AFTER SALES SUPPORT**

  1800-898 750

 [Aldi-AU@protel-service.com](mailto:Aldi-AU@protel-service.com)

**3**

**YEAR  
WARRANTY**



# ViSAGE®

## Hair Volume Styler

### Repair and Refurbished Goods or Parts Notice

---

REGISTER YOUR PURCHASE AT [www.aldi.com.au/en/about-aldi/product-registration/](http://www.aldi.com.au/en/about-aldi/product-registration/)  
TO KEEP UP-TO-DATE WITH IMPORTANT PRODUCT INFORMATION

---

Unfortunately, from time to time, faulty products are manufactured which need to be returned to the Supplier for repair.

Please be aware that if your product is capable of retaining user-generated data (such as files stored on a computer hard drive, telephone numbers stored on a mobile telephone, songs stored on a portable media player, games saved on a games console or files stored on a USB memory stick) during the process of repair, some or all of your stored data may be lost.

**We recommend you save this data elsewhere prior to sending the product for repair.**

You should also be aware that rather than repairing goods, we may replace them with refurbished goods of the same type or use refurbished parts in the repair process.

**Please be assured though, refurbished parts or replacements are only used where they meet ALDI's stringent quality specifications.**

If at any time you feel your repair is being handled unsatisfactorily, you may escalate your complaint. Please telephone us on 1800-898 750 or write to us at:

Install + Fix Solutions

Unit 1, 9 Kingsbury Street, Brendale QLD

4500 AUSTRALIA

1800-898 750 (8:30 am–6:00 pm AEST)

[service@wkfe.com.hk](mailto:service@wkfe.com.hk)

---

#### AFTER SALES SUPPORT

1800-898 750

[www.aldi.com.au](http://www.aldi.com.au)



ALDI guarantees that our exclusive brand products are developed to our stringent quality specifications. If you are not entirely satisfied with this product, please return it to the nearest ALDI store within 60 days from the date of purchase, for a full refund or replacement, or take advantage of our after sales support by calling the supplier's Customer Service Hotline.



### Made in China

VISAGE® is a registered trademark of ALDI Stores

DISTRIBUTED BY:

ALDI STORES

1 SARGENTS ROAD

MINCHINBURY NSW 2770

[www.aldi.com.au](http://www.aldi.com.au)

#### AFTER SALES SUPPORT

804385 



**1800-898 750**



**[service@wkfe.com.hk](mailto:service@wkfe.com.hk)**

MODEL:  
CT-521i

05/2021

**3**  
YEAR  
WARRANTY